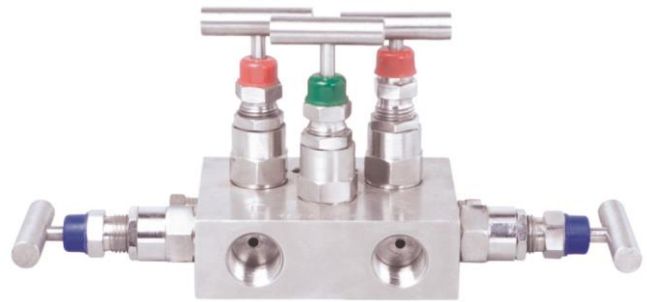


Five Valve Manifolds Remote mount (Pipe to Pipe)

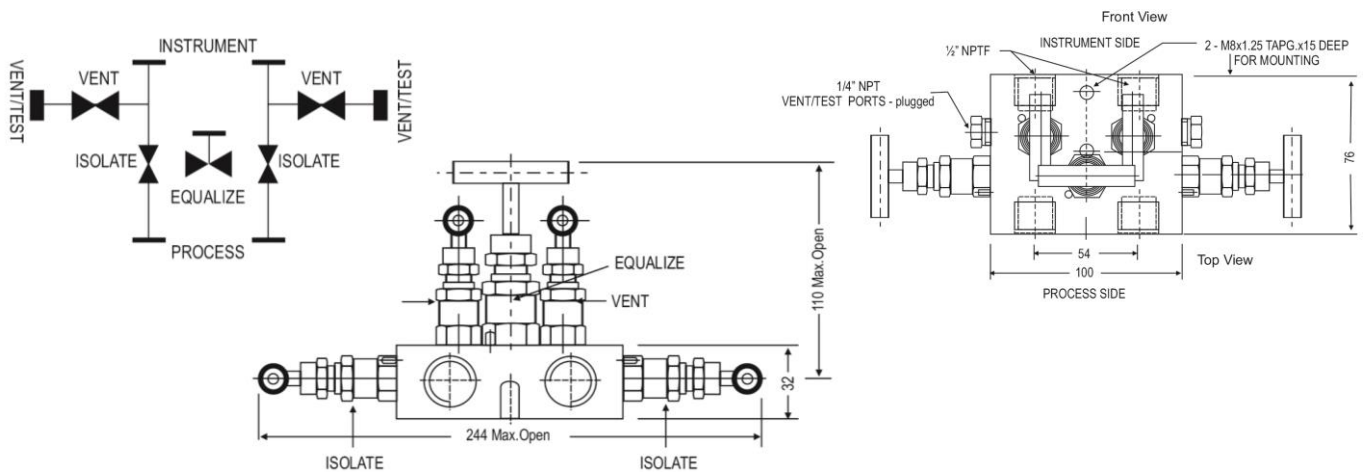


Features:

With threaded female ports on front side and back side for instrument and process connections. The two vent bonnets along with equalizing bonnet are positioned on the top side. The two isolation bonnets are positioned on left- and right-hand sides.

Standard Parameters:

Product	: 5VM
Process side	: 1/2" NPT[M]
Instrument side	: 1/2" NPT [F]
Vent/Test	: 1/4" NPT [F]



Specifications Standard version:

Body	: SS 316
Stem	: SS 316
Valve Assembly	: SS 316
'T' bar handle	: SS 304
Maximum working Pressure	: 6000 PSI
Maximum working Temp.	: 240° C
Packing	: PTFE
Type of Stem	: Type CT; Stem with conical metal tip
Drain port	: 1/4" NPT[F]; with SS 316 plug

Ordering codes

1. Body material		S6	4. Options		MT
CS	Carbon Steel		OS	Oxygen Service	
S6	SS 316		MT	Material test certificate	
S4	SS 304		HG	Hydro test Certificate	
Mo4	Monel 400				
Mo5	Monel 500				
HC	Hastelloy C				
2. Stem packing		P			
P	PTFE				
G	Grafoil				
3. Size = Inlet x outlet		06B.06B			
06B.06B	1/4" BSP[M] x 1/4" BSP[M]				
10B.10B	3/8" BSP[M] x 3/8" BSP[M]				
15B.15B	1/2" BSP[M] x 1/2" BSP[M]				
20B.20B	3/4" BSP[M] x 3/4" BSP[M]				

Ordering Example: 5VM-S6-P-06B.06B-MT

Note: Specifications and dimensions given in this product catalogue represents the state of engineering at the time of printing. Modifications may take place and materials specified may be replaced by others without prior notice.