

Capsule type pressure gauge All stainless-steel construction



Features:

- All SS Case
- All SS Measuring System
- Compact design
- CE Marking

Applications:

- Low pressure draft measurement
- Food & beverages,
- Pharmaceutical
- Breweries
- Conventional & nuclear power plants
- Clean air
- Gaseous
- Cryogenics
- Low viscous liquid & non corrosive media that will not obstruct the pressure system.

Standard:

- EN 837-3

Standard Parameters

Accuracy	: ±1.6% of F. S.
Ambient temperature	: -25 to +65°C
Process temperature	: 150°C max.
Operating Pressure Range	: 75% of the scale value
Over Pressure Limit	: 130% of Max. Scale Value

Materials of Construction

Case & bezel	: AISI 304 SS (Bayonet Type)
Capsule	: AISI 316 SS
Socket	: AISI 316 SS (Directly welded to the case)
Movement	: AISI 304 SS
Joints	: Tig Argon Arc Welding
Protection	: IP 65
Dial	: Aluminium, black graduation on white background
Pointer	: Aluminium, black coloured, slotted zero adjustable
Window	: Sheet glass
Vent plug	: Neoprene
Gasket	: Neoprene

Temperature Effect

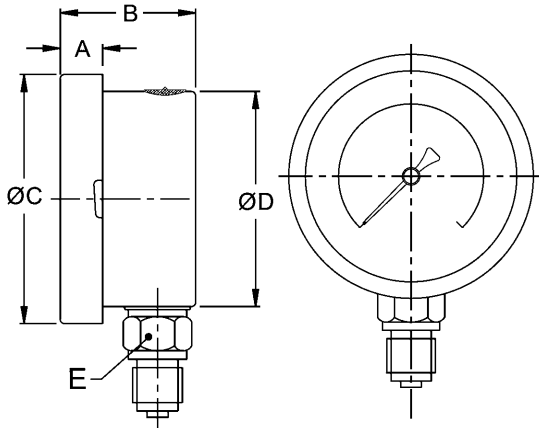
The variation of indication caused by effects of temperature is to be calculated by below formula which is to be added in the specific accuracy while measurement:

Formula $\pm 0.06 \times (t_2 - t_1) \% \text{ of F.S.}$

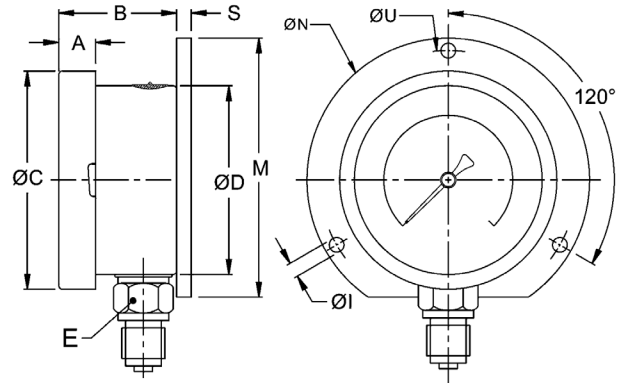
where t1: reference temperature (+20°C) and t2: ambient temperature in °C.

Dimensional drawing – 63mm

TYPE 1



TYPE 2



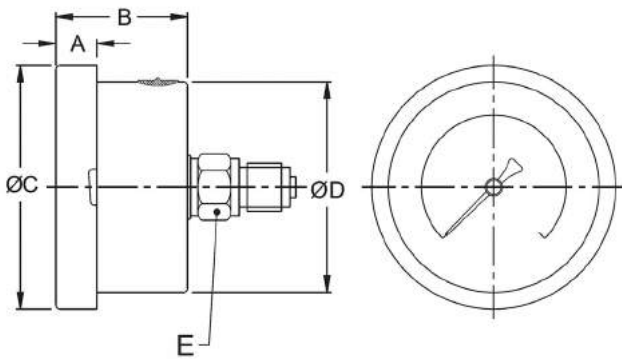
NS	A	B	ØC	ØD	E	W
63	12.5	46	77.5	66.5	A/F 14	270

W = Weight in grams with box

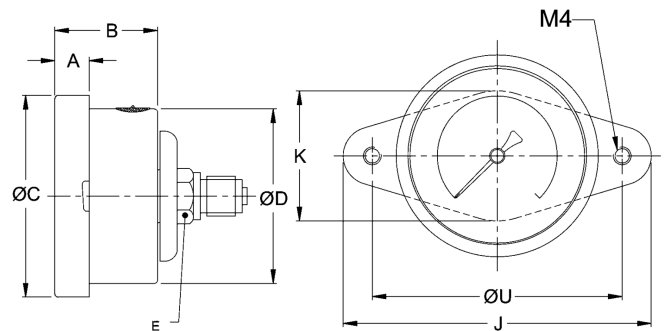
NS	A	B	ØC	ØD	E	S	ØN	ØI	ØU	M	W
63	12.5	46	77.5	66.5	A/F 14	7	86	3.6	75	80	300

= Weight in grams with box

TYPE 4



TYPE 10



NS	A	B	ØC	ØD	E	W
63	12.5	46	77.5	66.5	A/F 14	260

W = Weight in grams with box

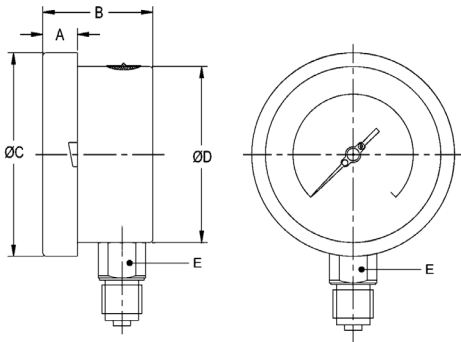
NS	A	B	ØC	ØD	E	J	K	ØU	W
63	12.5	46	77.5	66.5	A/F 14	91	38	70.5	260

W = Weight in grams with box

Note: ● Drawings are not to scale ● All dimensions are in mm

Dimensional drawing 100-150mm

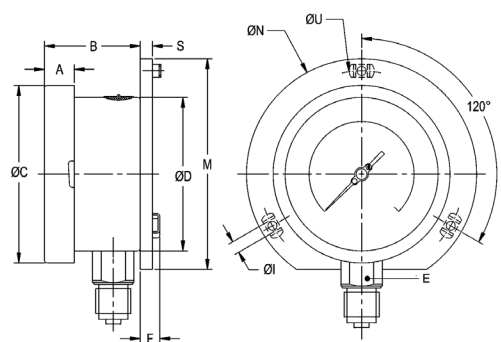
TYPE 1



NS	A	B	ØC	ØD	E	W
100	12.5	47	111	100	22	605
125	15	48	129	119	22	670
150	15	49	161	149	22	1030

W = Weight in grams with box

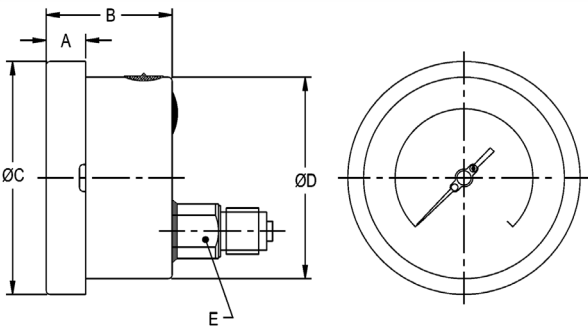
TYPE 2



NS	A	B	ØC	ØD	E	M	S	F	ØI	ØN	ØU	W
100	12.5	45	111	100	22	128	6	14.5	6	134	118	690
125	15	46	129	119	22	143	4	15	6	152	138	760
150	15	46.5	161	149	22	174.5	5.5	15	6	186	168	1110

W = Weight in grams with box

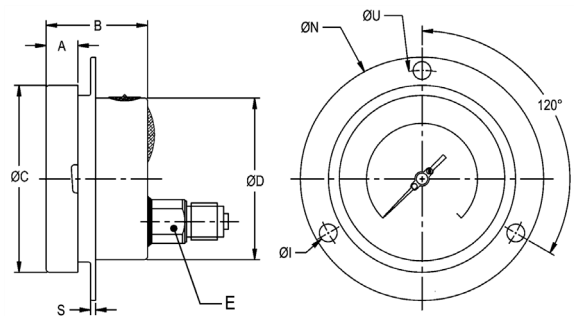
TYPE 3



NS	A	B	ØC	ØD	E	W
100	12.5	47	111	100	22	640
125	15	48	129	119	22	750
150	15	49	161	149	22	1000

W = Weight in grams with box

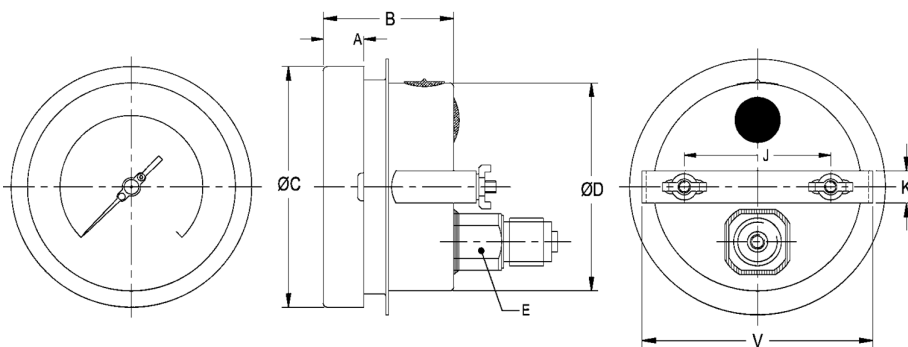
TYPE 5



NS	A	B	ØC	ØD	E	S	ØI	ØN	ØU	W
100	12.5	47	111	100	22	1	6	134	118	695
125	15	48	129	119	22	4	6	150	137	850
150	15	49	161	149	22	5	6	186	168	1100

W = Weight in grams with box

TYPE 8



NS	A	B	ØC	ØD	E	J	K	V	W
100	12.5	47	111	100	22	72	16	108	740
125	15	48	129	119	22	75	16	125	890
150	15	49	161	149	22	106.5	16	166	1100

W = Weight in grams with box

Note: ● Drawings are not to scale ● All dimensions are in mm

Range table

Note : We offer National / International Scales like mbar, kPa, inWC, MWC, inHg, mmHg & Dual Scale or Equivalent scales as per the requirement can be provided on request. Following are the example tables for mmWC scales.

Pressure Range

Single scale with mmWC				
0/250	0/600	0/1600	0/2500	0/6000
0/400	0/1000	0/2000	0/4000	

Vacuum Range

Single scale with mmWC				
-250/0	-600/0	-1600/0	-2500/0	-600/0
-400/0	-1000/0	-2000/0	-4000/0	

Compound Range

Single scale with mmWC				
-100/150	-200/400	-600/1000	-1000/1500	-2000/4000
-150/250	-400/600	-800/1200	-1500/2500	

Accessories

Gauge Cock	Siphon
------------	--------

Ordering codes

<p>1. Dial Size</p> <table border="1"> <thead> <tr> <th>Code</th> <th>Nominal size</th> </tr> </thead> <tbody> <tr> <td>C</td> <td>63mm</td> </tr> <tr> <td>E</td> <td>100mm</td> </tr> <tr> <td>F</td> <td>125mm</td> </tr> <tr> <td>G</td> <td>150mm</td> </tr> </tbody> </table> <p>2. Mounting</p> <table border="1"> <tbody> <tr> <td>1</td> <td>Direct bottom</td> </tr> <tr> <td>2</td> <td>Bottom surface</td> </tr> <tr> <td>3</td> <td>Direct lower back entry◆</td> </tr> <tr> <td>4</td> <td>Direct center back entry#</td> </tr> <tr> <td>5</td> <td>Flush back panel with front flange◆</td> </tr> <tr> <td>8</td> <td>Lower Back entry with mounting bracket◆</td> </tr> <tr> <td>10</td> <td>Centre Back entry with mounting bracket#</td> </tr> </tbody> </table> <p>◆Not applicable for NS 63mm #only applicable for NS 63mm</p> <p>3. Gauge Connection</p> <table border="1"> <tbody> <tr> <td>06B</td> <td>1/4" BSP[M]#</td> </tr> <tr> <td>10B</td> <td>3/8" BSP[M]*</td> </tr> <tr> <td>15B</td> <td>1/2" BSP[M] *</td> </tr> <tr> <td>06N</td> <td>1/4" NPT[M]#</td> </tr> <tr> <td>10N</td> <td>3/8" NPT[M]*</td> </tr> <tr> <td>15N</td> <td>1/2" NPT[M]*</td> </tr> <tr> <td>M20</td> <td>M20 X 1.5[M]*</td> </tr> </tbody> </table> <p>#only applicable for NS 63mm</p> <p>*These connections will be provided through adaptors for NS 63 mm.</p>	Code	Nominal size	C	63mm	E	100mm	F	125mm	G	150mm	1	Direct bottom	2	Bottom surface	3	Direct lower back entry◆	4	Direct center back entry#	5	Flush back panel with front flange◆	8	Lower Back entry with mounting bracket◆	10	Centre Back entry with mounting bracket#	06B	1/4" BSP[M]#	10B	3/8" BSP[M]*	15B	1/2" BSP[M] *	06N	1/4" NPT[M]#	10N	3/8" NPT[M]*	15N	1/2" NPT[M]*	M20	M20 X 1.5[M]*	<p>E</p> <p>1</p> <p>10B</p>	<p>4. Options</p> <table border="1"> <tbody> <tr> <td>S6</td> <td>AISI 316 SS case & bezel◆</td> </tr> <tr> <td>5C</td> <td>Five-point calibration certificate</td> </tr> <tr> <td>PG</td> <td>Plexi glass</td> </tr> <tr> <td>SG</td> <td>Shatterproof/safety glass</td> </tr> <tr> <td>TG</td> <td>Toughened glass</td> </tr> <tr> <td>DS</td> <td>Dampening screw in AISI 316 SS</td> </tr> <tr> <td>ST</td> <td>SS tag plate</td> </tr> <tr> <td>DT</td> <td>Dial tag marking</td> </tr> <tr> <td>CD</td> <td>Custom designed dial</td> </tr> <tr> <td>MT</td> <td>Material test certificate#</td> </tr> <tr> <td>NT</td> <td>Calibration certificate with NABL traceability</td> </tr> </tbody> </table> <p>◆ Not applicable for NS 63mm # Material test certificate will be provided for wetted parts only. For others, pls contact factory.</p> <p>5. Range</p> <p>Refer range table</p>	S6	AISI 316 SS case & bezel◆	5C	Five-point calibration certificate	PG	Plexi glass	SG	Shatterproof/safety glass	TG	Toughened glass	DS	Dampening screw in AISI 316 SS	ST	SS tag plate	DT	Dial tag marking	CD	Custom designed dial	MT	Material test certificate#	NT	Calibration certificate with NABL traceability	<p>5C</p> <p>0-4000</p>
Code	Nominal size																																																														
C	63mm																																																														
E	100mm																																																														
F	125mm																																																														
G	150mm																																																														
1	Direct bottom																																																														
2	Bottom surface																																																														
3	Direct lower back entry◆																																																														
4	Direct center back entry#																																																														
5	Flush back panel with front flange◆																																																														
8	Lower Back entry with mounting bracket◆																																																														
10	Centre Back entry with mounting bracket#																																																														
06B	1/4" BSP[M]#																																																														
10B	3/8" BSP[M]*																																																														
15B	1/2" BSP[M] *																																																														
06N	1/4" NPT[M]#																																																														
10N	3/8" NPT[M]*																																																														
15N	1/2" NPT[M]*																																																														
M20	M20 X 1.5[M]*																																																														
S6	AISI 316 SS case & bezel◆																																																														
5C	Five-point calibration certificate																																																														
PG	Plexi glass																																																														
SG	Shatterproof/safety glass																																																														
TG	Toughened glass																																																														
DS	Dampening screw in AISI 316 SS																																																														
ST	SS tag plate																																																														
DT	Dial tag marking																																																														
CD	Custom designed dial																																																														
MT	Material test certificate#																																																														
NT	Calibration certificate with NABL traceability																																																														
<p>Ordering Example: CS-E-1-10B-5C-0-4000mmWC</p> <p>Note: Specifications and dimensions given in this product catalogue represents the state of engineering at the time of printing. Modifications may take place and materials specified may be replaced by others without prior notice.</p>																																																															