

COOLING TOWER

CT

Application

COOLING TOWERS ARE USED MAINLY TO PROTECT PRESSURE INSTRUMENTS, GAUGES, SWITCHES AND TRANSMITTERS DIRECTLY COMING IN CONTACT WITH HIGH TEMPERATURE PROCESS FLUIDS OR VAPOURS FILLED WITH CONDENSATION FLUIDS. THESE ARE MOUNTED BETWEEN PROCESS AND PRESSURE INSTRUMENT. THEY REDUCE PROCESS PULSATION, ACT AS HEAT DISPENSER AND GENERATE

Special Features

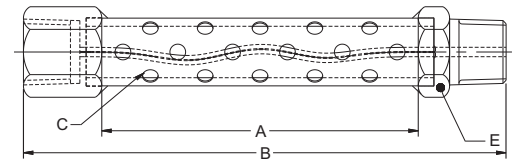
STAINLESS STEEL CONSTRUCTION
SUITABLE FOR CLEAN AIR, GASES & NON CRYSTALLIZED LIQUIDS

Specifications

Process Connection 1/4" BSP(M)
Instrument Connection 1/4" BSP(F)
Material of Connection AISI 316 SS



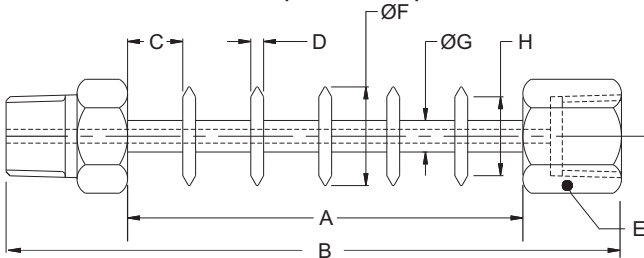
TYPE - C T1 (PERFORATED TYPE)



A	B	E	C
100	150	A/F 25.0	Ø5.0

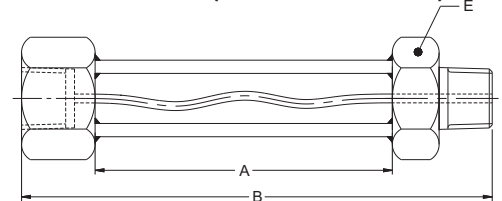
DIMENSIONS - STANDARD VERSION

TYPE - C T2(FIN TYPE)



A	B	C	D	ØF	ØG	H	E
100	150 ± 5	14	3.25	25	10	20	A/F 25.0

TYPE - C T3 (CAPILLARY TYPE)



A	B	E
100	150 ± 5	A/F 25.0

HOW TO ORDER

All Dimensions are in mm, Drawings are not to scale

BASIC MODEL

CODE	TYPE	BODY	TOTAL LENGTH (INCLUDING THREAD)	CONNECTIONS	Example
1	PERFORATED	S6 AISI 316 SS (Standard)	150 mm	6BM.6BF 1/4" BSP (M x F)(Standard) 10BM.10BF 3/8" BSP (M x F) 15BM.15BF 1/2" BSP (M x F)	CT
2	FIN TYPE	S6L AISI 316L SS	300 mm	6NM.6NF 1/4" NPT (M x F) 10NM.10NF 3/8" NPT (M x F) 15NM.15NF 1/2" NPT (M x F)	1
3	CAPILLARY				S6
					150 mm
					10BM.10BF

Note : Connections like Metric/ PT/ PF/ Flaired/ UNF/ G/ R etc can be provided on request.

Ordering Example: CT - 1 - 150mm - 10BM.10BF

Note : Specifications and dimensions given in this product catalogue represents the state of engineering at the time of printing. Modifications may take place and materials specified may be replaced by others without prior notice.