

DIAPHRAGM SEAL DIRECT COUPLED TYPE

DSDC

Applications :

Diaphragm seals are provided in the instruments like pressure gauges, switches, Transmitters in order to isolate the sensing element from the main service due To its corrosive, viscous and sedimented nature and to avoid clogging and solidification.

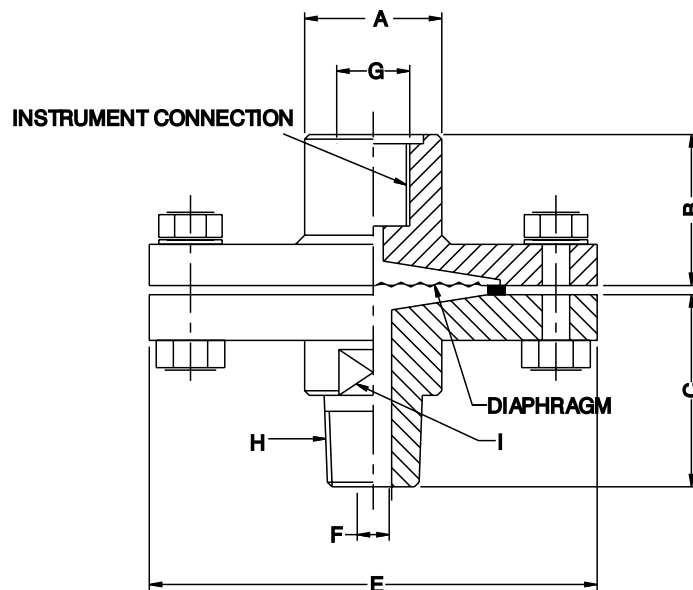
Special Features :

- ★ Direct Coupled Type
- ★ Two Piece Construction
- ★ Ideal For General Purpose Application
- ★ Robust Design
- ★ All SS Construction
- ★ Std. version compatible with Delta model : IP



Specifications

Pressure Range	1 kg/cm ² to 70 kg/cm ²
Process temperature	- 40° C to 200 ° C or as per fill fluid
Instrument Connection	3/8" BSP (F)
Process Connection	1/2" / NPT/BSP (M)
Diaphragm	AISI 316L SS
Top Chamber	AISI 316 SS (Forged)
Bottom Chamber	AISI 316 SS (Forged)
Nuts / Bolts	AISI 304 SS
Gasket	PTFE (upto 200° C)/Metal Seal (upto 350°C)
Filling Fluid	Silicon Oil - DC 200



A	B	C	E	F	G	H	I
30	25	47	98	Ø8	3/8" BSP(F)	*	A/F 25

How to order

OPTIONS:

FOR NON STANDARD PRODUCTS/OPTIONAL ITEMS, PLEASE CONTACT FACTORY FOR DELIVERY AND MINIMUM QUANTITY OF ORDER

DSDC

DIAPHRAGM:

TN

S6L	AISI 316L SS	NI	NICKEL	TN	TITANIUM
HC	HASTELLOY 'C'	AG	SILVER		
ML	MONEL	TL	TANTALUM		

GASKETS:

VI

VI PTFE SEAL GASKET 200°C YR METAL SEAL

PROCESS CONNECTION:

15NM

10BF	3/8" BSP(F)	15NF	1/2" NPT (F)	06NM	1/4" BSP(M)
15BF	1/2" BSP(F)	06NF	1/4" NPT (F)	10NM	3/8" NPT(M)
06BF	1/4" BSP(F)	10BM	3/8" BSP (M)	06NM	1/4" NPT(M)
10NF	3/8" NPT(F)	15BM	1/2" BSP(M)	15NM	1/2" NPT(M)

Note : Connections like PT/PF/Flaired /UNF/G/R etc.can be provided on request.
The material of adaptor is same as per bottom chamber material.

INSTRUMENT CONNECTION:

10B

15B	1/2" BSP(F)	06B	1/4" BSP(F)	06N	1/4" NPT (F)
15N	1/2" NPT (F)	10N	3/8" NPT(F)	10B	3/8" BSP (F)

BOTTOM CHAMBER:

S4

S6 AISI 316 SS S4 AISI 304 SS

NUTS & BOLTS FOR SEALED CHAMBER CLAMPING:

S4

S4 AISI 304 SS

FLUSHING RING:

VL

VL FLUSHING RING WITH 1/2"NPT PLUG (AISI 304 SS)
 VD FLUSHING RING WITH 1/2"NPT PLUG (AISI 316 SS)
 VE FLUSHING RING WITH 1/4"NPT PLUG (AISI 304 SS)
 VF FLUSHING RING WITH 1/4"NPT PLUG (AISI 316 SS)

FILLING FLUIDS:

US

US FLUROLUBE 4.2 [-45 TO 175 °C / -49 TO 374° F]
 UT FLUROLUBE 6.3 [-40 TO 235 °C / -40 TO 455° F]
 UU FLUROLUBE FS5 [-40 TO 150°C / -40 TO 302°F]
 UV FLUROLUBE FS5 [-40 TO 150°C / -40 TO 302°F]
 UX SILICON DC 200-10CS [-40 TO 205°C / -40 TO 401F]
 UY SILICON DC 704 [0 TO 315 °C / 32 TO 599° F]

PROTECTION ON WETTED PARTS: VV

- VS PTFE LINING ON BOTTOM CHAMBER- 2mm THICK
- VZ PTFE COATING ON DIAPHRAGM
- VV PTFE PROTECTION FOR DIAPHRAGM

TYPE: A0 WITHOUT CAPILLARY A1 WITH CAPILLARY A1

CAPILLARY: PE AISI 304 SS PG AISI 316 SS PE

CAPILLARY COVERED WITH ARMOUR: PF

- PF AISI 304 SS PH AISI 316 SS PI PVC

CAPILLARY LENGTH(Max up to 6Mtrs.): IN METERS (e.g. 1.5 = 1.5 METERS 2.0 = 2 METERS) 3Mtr.

OTHER OPTIONS: TC DRY SEAL ONLY WITHOUT INSTRUMENT

Ordering Example: DSDC - YA - TN - VI - 15NM - 10B - S4 - S4 -VF- UX - VV - A1 - PE - PF - 3Mtr. - TC